

NEWS RELEASE

Media enquiries:

Group Strategy & Communications

Karen De Cruz – General Manager, +6016 2965 778 / karen@easternandoriental.com

Ann Tan – Senior Manager, +6016 4639 118 / anntan@easternandoriental.com

Gurney Drive Anti-climb Fencing Installation Update No. 4

Penang, 22 March 2016 – Tanjung Pinang Development Sdn Bhd (TPD), the developer for Seri Tanjung Pinang Phase 2 (STP2) today provided its fourth weekly update on the progress of anti-climb fencing installation works along Gurney Drive.

Since the third update, fencing works have progressed to cover approximately 23 percent of the total 2 kilometres to be fenced. Works at the first seven sections covering 460 metres have been fully completed and are in progress at the latest 80-metre section. As per authorities' requirements, the 80-metre stretch where works are on-going have been barricaded for public safety.



Aerial view of fencing works progress

Metal Structure Works

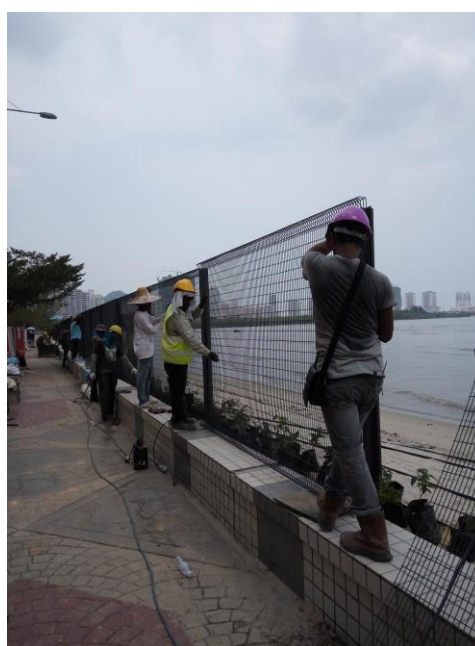
To-date, metal structure works involving the installation of the fencing poles, mounting of planter boxes and installation of mesh material have been completed for a stretch of 460 metres.

At the latest section, fencing poles have already been fully installed while 20 of the total 26 planter boxes have already been mounted. Installation of mesh fencing will commence next.

Landscape Works

Landscaping works involving the filling of soil into the planter boxes followed by the planting of the selected creeper, Shower of Gold (*Tristellateia Australasiae*) are progressing well, apace with the metal structure works.

Activity	Progress
Soil filling	Completed for sections 1 to 7 – 460 metres Ongoing at 8 th section ; 14 out of 26 planter boxes filled
Planting of creepers	Completed for sections 1 to 7 – 460 metres Yet to commence at 8 th section



Mounting up planter boxes (left); Installing mesh fencing material (right)

Work Personnel at the Site

Work personnel on-site include foundry workers and painters. Workers are required to clear the site at the end of each work day to ensure an orderly work area.

TPD will continue to keep the public informed by providing periodic updates for the duration of the fencing installation process.

[END]

Background on the Installation of Anti-climb Fencing along Gurney Drive

Tanjung Pinang Development Sdn Bhd (TPD), the developer for Seri Tanjung Pinang Phase 2 (STP2), is in the process of installing an approximately 2 kilometre long fencing for public safety along the landside perimeter of the STP2 and Gurney Drive foreshore reclamation area.

The fencing will be installed from the Gurney Drive roundabout to the southern end of Gurney Drive at Jalan Pangkor. The anti-climb mesh material selected for the fence will ensure a secure and safe waterfront during the project development period.

Contrasting with the standard solid metal sheet hoarding commonly used by the property and construction industry, TPD has invested in a specially-designed permeable mesh fencing material which will enable the public to continue enjoying the sea view and breeze. This same security anti-climb fencing is used by E&O at its Seri Tanjung Pinang Quayside Seafront Resort Condominiums.

The public will also continue to have access to the existing Gurney Drive promenade as the fencing will be secured on the far side of the seawall.

For aesthetic purposes, planter boxes will be attached to the fencing and creepers will grow to add greenery to the alignment.

Fencing installation works commenced on 29 February 2016 and are estimated to complete in 12 weeks.

The E&O Group

The E&O Group (**Eastern & Oriental Berhad**) is a listed company on Bursa Malaysia that has established a reputation as the premier lifestyle property developer of exclusive addresses for the discerning.

In Kuala Lumpur, E&O's landmark properties include **The Mews**, **St Mary Residences**, **Dua Residency**, **Idamansara** and **Seventy Damansara**, all located in the most prime and prestigious neighbourhoods of the capital city.

In Penang, **Seri Tanjung Pinang** is the island's first masterplanned seafront development that is now a highly sought-after and thriving community to locals as well as expatriates from over 20 nationalities.

In Johor's southern development corridor of Iskandar Malaysia, E&O has embarked on **Avira**, a 207-acre wellness-themed development within Medini that has easy accessibility to the Second Link connection to Singapore.

In its expansion overseas, E&O's international foray into real estate investment and development is focused within prime locations in London, including **Princes House** along Kingsway, **ESCA House** in Bayswater, and a commercial property in **Hammersmith**.

E&O's leading position as a lifestyle developer is anchored by its niche in luxury hospitality derived from its namesake, the iconic **Eastern & Oriental Hotel**, a cherished heritage landmark in George Town established in 1885. Along the popular beachfront, **Lone Pine Hotel** stands as the only boutique resort on Batu Ferringhi and the Group has further leveraged on its experience and expertise in hospitality management with the opening of **E&O Residences** serviced apartments in Kuala Lumpur.

www.easternandoriental.com