

NEWS RELEASE

Media enquiries:

Group Strategy & Communications

Karen De Cruz – General Manager, +6016 2965 778 / karen@easternandoriental.com

Ann Tan – Senior Manager, +6016 4639 118 / anntan@easternandoriental.com

Gurney Drive Anti-climb Fencing Installation Update No. 2

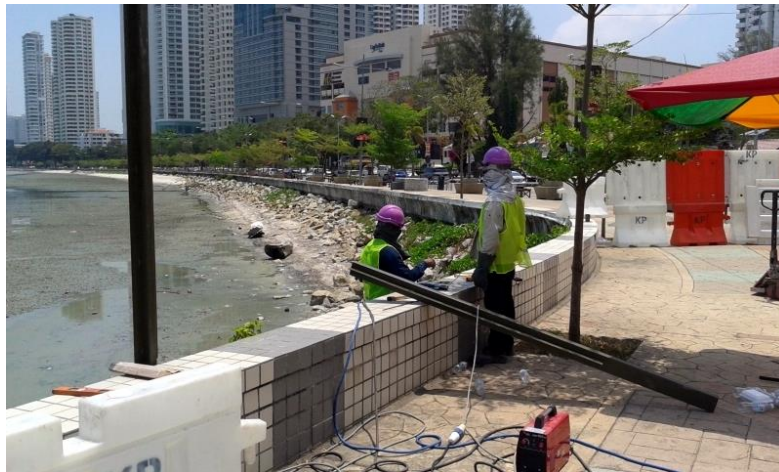
Penang, 8 March 2016 – Tanjung Pinang Development Sdn Bhd (TPD), the developer for Seri Tanjung Pinang Phase 2 (STP2) today provided its second update on the progress of anti-climb fencing installation works along Gurney Drive. These weekly updates will be issued weekly by TPD.

Metal Structure works

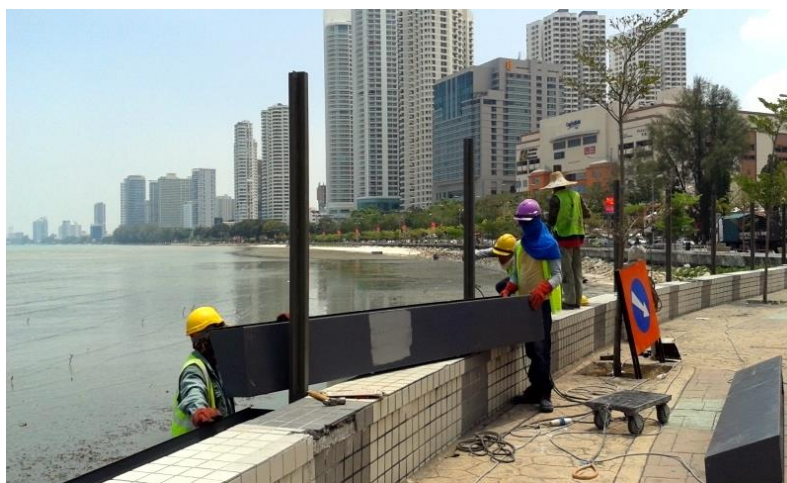
To-date, metal structure works at the **first 50-metre section** of Gurney Drive near the roundabout have been completed. These works include the installation of the fencing poles, mounting of planter boxes and installation of mesh material.



Completed section of mesh fencing



Workers installing fencing poles



Mounting planter boxes

Barricades at the first section have been removed and transferred to the **second 50 metre section** of the fencing works.

At the second section, the full set of 12 fencing poles have been installed while eight of the 11 planter boxes have been mounted.

Landscape Works

The yellow flowering creeper *Tristellateia Australasiae*, or Shower of Gold as it is commonly known, has been selected to be planted along the Gurney Drive fencing. It is a vine that is easy to maintain and flowers generously throughout the year.



Tristellateia australasiae or Shower of Gold



Example of Shower of Gold creeper cascading over a mesh fence

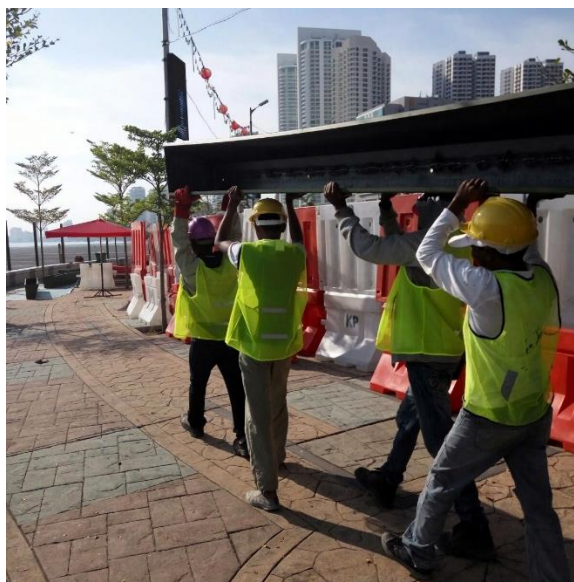
Soil filling and planting works at the first section of fencing are ongoing.

Activity	Progress
Soil filling	First section – all planter boxes filled, 17 in total Second section – seven out of 11 planter boxes filled
Planting of creepers	First section – planting works completed for five out of 17 boxes Second section – yet to commence

Work Personnel at the Site

There are presently foundry workers and painters on-site.

At the end of each work day, workers will be clearing the site to maintain an orderly work area.



Workers carrying planter box

TPD will continue to keep the public informed by providing periodic updates for the duration of the fencing installation process.

[END]

Background on the Installation of Anti-climb Fencing along Gurney Drive

Tanjung Pinang Development Sdn Bhd (TPD), the developer for Seri Tanjung Pinang Phase 2 (STP2), is in the process of installing an approximately 2 kilometre long fencing for public safety along the landside perimeter of the STP2 and Gurney Drive foreshore reclamation area.

The fencing will be installed from the Gurney Drive roundabout to the southern end of Gurney Drive at Jalan Pangkor. The anti-climb mesh material selected for the fence will ensure a secure and safe waterfront during the project development period.

Contrasting with the standard solid metal sheet hoarding commonly used by the property and construction industry, TPD has invested in a specially-designed permeable mesh fencing material which will enable the public to continue enjoying the sea view and breeze. This same security anti-climb fencing is used by E&O at its Seri Tanjung Pinang Quayside Seafront Resort Condominiums.

The public will also continue to have access to the existing Gurney Drive promenade as the fencing will be secured on the far side of the seawall.

For aesthetic purposes, planter boxes will be attached to the fencing and creepers will grow to add greenery to the alignment.

Fencing installation works commenced on 29 February 2016 and are estimated to complete in 12 weeks.

The E&O Group

The E&O Group (**Eastern & Oriental Berhad**) is a listed company on Bursa Malaysia that has established a reputation as the premier lifestyle property developer of exclusive addresses for the discerning.

In Kuala Lumpur, E&O's landmark properties include **The Mews**, **St Mary Residences**, **Dua Residency**, **Idamansara** and **Seventy Damansara**, all located in the most prime and prestigious neighbourhoods of the capital city.

In Penang, **Seri Tanjung Pinang** is the island's first masterplanned seafront development that is now a highly sought-after and thriving community to locals as well as expatriates from over 20 nationalities.

In Johor's southern development corridor of Iskandar Malaysia, E&O has embarked on **Avira**, a 207-acre wellness-themed development within Medini that has easy accessibility to the Second Link connection to Singapore.

In its expansion overseas, E&O's international foray into real estate investment and development is focused within prime locations in London, including **Princes House** along Kingsway, **ESCA House** in Bayswater, and a commercial property in **Hammersmith**.

E&O's leading position as a lifestyle developer is anchored by its niche in luxury hospitality derived from its namesake, the iconic **Eastern & Oriental Hotel**, a cherished heritage landmark in George Town established in 1885. Along the popular beachfront, **Lone Pine Hotel** stands as the only boutique resort on Batu Ferringhi and the Group has further leveraged on its experience and expertise in hospitality management with the opening of **E&O Residences** serviced apartments in Kuala Lumpur.

www.easternandoriental.com