

## NEWS RELEASE

**Media enquiries:**

Group Strategy & Communications

Karen De Cruz – General Manager, +6016 2965 778 / karen@easternandoriental.com

Ann Tan – Senior Manager, +6016 4639 118 / anntan@easternandoriental.com

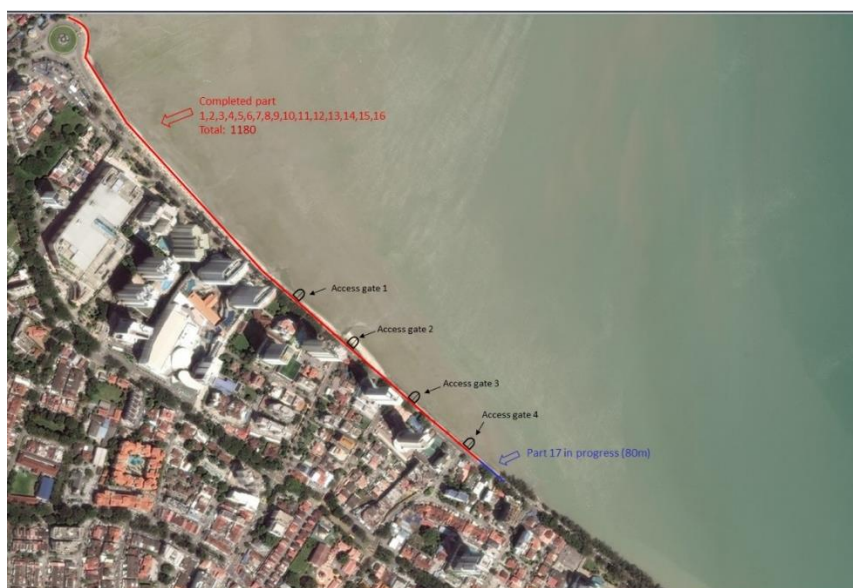
### Gurney Drive Anti-climb Fencing Installation Update No. 7

Penang, 12 April 2016 – Seri Tanjung Pinang Phase 2 (STP2) developer, Tanjung Pinang Development Sdn Bhd (TPD), today provided its seventh weekly update on the progress of anti-climb fencing installation works along Gurney Drive.

The fencing installation works along Gurney Drive is progressing steadily, with almost 60 percent or 1,180 metres of the total 2 kilometres of fencing being fully installed to-date. Works are in progress at the latest 80-metre section, which has been barricaded for public safety, in compliance with authorities' requirements.

The recent stretch of fencing works covers one of the narrower parts of Gurney Drive, making it challenging for the necessary works to be carried out. As a result, the protective barricades have had to be placed closer to the edge of the pavement bordering the road, leaving a narrow strip for pedestrians' passage. In a proactive response to mitigate this, the developer paid fees for the temporary use of existing Gurney Drive carpark bays to improve pedestrian safety and access.

In the earlier sections, pedestrians had access to 70-80% of the pavement width. The developer has updated that works on this narrow stretch will be completed by this Saturday (16 April 2016) and pedestrians will regain access to at least 70% of the walkway.



*Aerial view of fencing works progress*

The developer has also thus far, installed four access gates along the fencing to enable access to city council workers for maintenance of the plantings behind the fencing and cleaning of the coastline. These gates are kept locked at other times for public safety.

**Metal Structure Works**

Since the last update, 1,180 metres of metal structure works involving the installation of the fencing poles, mounting of planter boxes and installation of mesh material have been completed. At the section where work is in progress, 18 fencing poles are currently being installed whilst all planter boxes have been mounted.



(Left) Workers planting the creepers; (right) Workers securing the access gates.

**Landscape Works**

The filling of soil into the planter boxes followed by the planting of the Shower of Gold (*Tristellateia Australasiae*) creeper are on track.

Activity	Progress
Soil filling	Completed for sections 1 to 16 – 1,180 metres Ongoing at 17 <sup>th</sup> section; all planter boxes filled
Planting of creepers	Completed for sections 1 to 16 – 1,180 metres Ongoing at 17 <sup>th</sup> section; 8 out of 26 planter boxes

**Work Personnel at the Site**

Work personnel on-site include foundry workers and painters. Workers are required to clear the site at the end of each work day to ensure an orderly work area.

TPD will continue to provide periodic updates for the duration of the fencing installation process.

[END]

## **Background on the Installation of Anti-climb Fencing along Gurney Drive**

Tanjung Pinang Development Sdn Bhd (TPD), the developer for Seri Tanjung Pinang Phase 2 (STP2), is in the process of installing an approximately 2 kilometre long fencing for public safety along the landside perimeter of the STP2 and Gurney Drive foreshore reclamation area.

The fencing will be installed from the Gurney Drive roundabout to the southern end of Gurney Drive at Jalan Pangkor. The anti-climb mesh material selected for the fence will ensure a secure and safe waterfront during the project development period.

Contrasting with the standard solid metal sheet hoarding commonly used by the property and construction industry, TPD has invested in a specially-designed permeable mesh fencing material which will enable the public to continue enjoying the sea view and breeze. This same security anti-climb fencing is used by E&O at its Seri Tanjung Pinang Quayside Seafront Resort Condominiums.

The public will also continue to have access to the existing Gurney Drive promenade as the fencing will be secured on the far side of the seawall.

For aesthetic purposes, planter boxes will be attached to the fencing and creepers will grow to add greenery to the alignment.

Fencing installation works commenced on 29 February 2016 and are estimated to complete in 12 weeks.

## **The E&O Group**

The E&O Group (**Eastern & Oriental Berhad**) is a listed company on Bursa Malaysia that has established a reputation as the premier lifestyle property developer of exclusive addresses for the discerning.

In Kuala Lumpur, E&O's landmark properties include **The Mews**, **St Mary Residences**, **Dua Residency**, **Idamansara** and **Seventy Damansara**, all located in the most prime and prestigious neighbourhoods of the capital city.

In Penang, **Seri Tanjung Pinang** is the island's first masterplanned seafront development that is now a highly sought-after and thriving community to locals as well as expatriates from over 20 nationalities.

In Johor's southern development corridor of Iskandar Malaysia, E&O has embarked on **Avira**, a 207-acre wellness-themed development within Medini that has easy accessibility to the Second Link connection to Singapore.

In its expansion overseas, E&O's international foray into real estate investment and development is focused within prime locations in London, including **Princes House** along Kingsway, **ESCA House** in Bayswater, and a commercial property in **Hammersmith**.

E&O's leading position as a lifestyle developer is anchored by its niche in luxury hospitality derived from its namesake, the iconic **Eastern & Oriental Hotel**, a cherished heritage landmark in George Town established in 1885. Along the popular beachfront, **Lone Pine Hotel** stands as the only boutique resort on Batu Ferringhi and the Group has further leveraged on its experience and expertise in hospitality management with the opening of **E&O Residences** serviced apartments in Kuala Lumpur.

[www.easternandoriental.com](http://www.easternandoriental.com)